

Optimization of Naphtha Feedstock Blending
for
Integrated Olefins-Aromatics Plant
Production Scheduling

Y. Ota, K. Namatame, H. Hamataka, K. Nakagawa and H. Abe

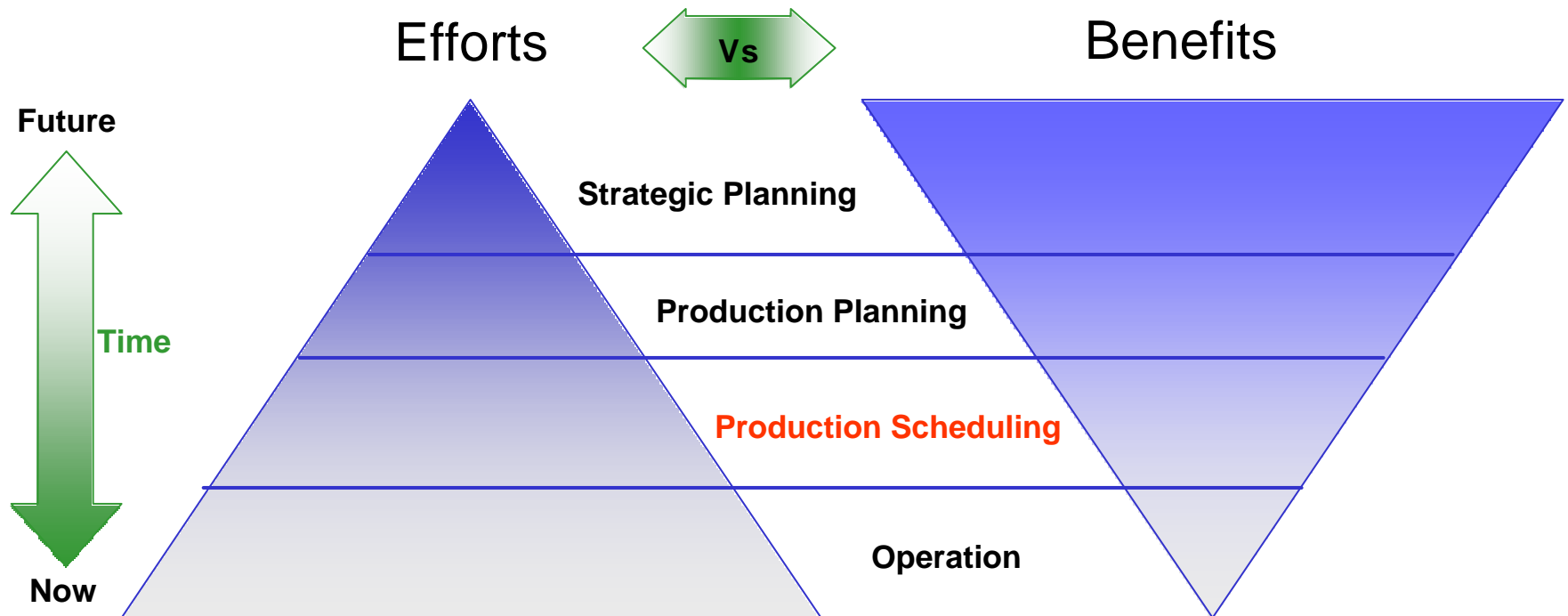
Mitsubishi Chemical Corporation

A. Cervantes, I. B. Tjoa and F. Valli

MC Research & Innovation Center

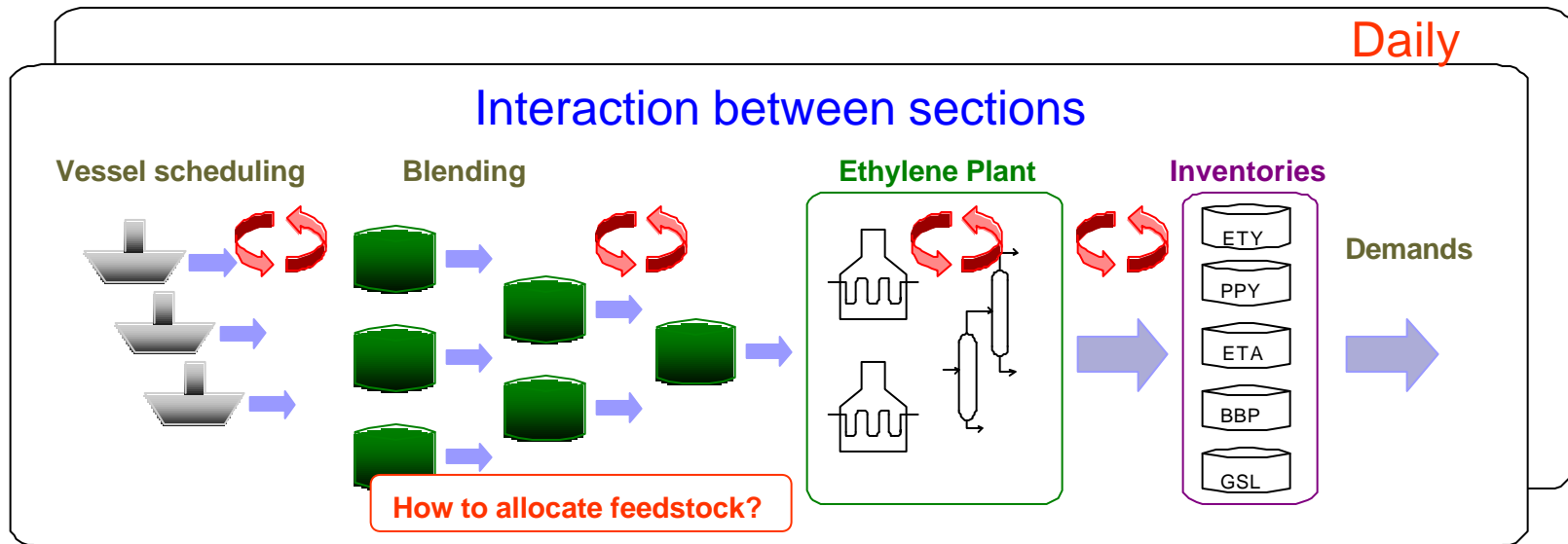
Hierarchy of Decisions in Business Activities

↪ Optimization efforts for improving profitability



Here we focus on production scheduling

Issues in Ethylene Plant Production Scheduling



Model requirement:

- Accurate (rigorous) daily production model
- Mixed Integer Nonlinear model

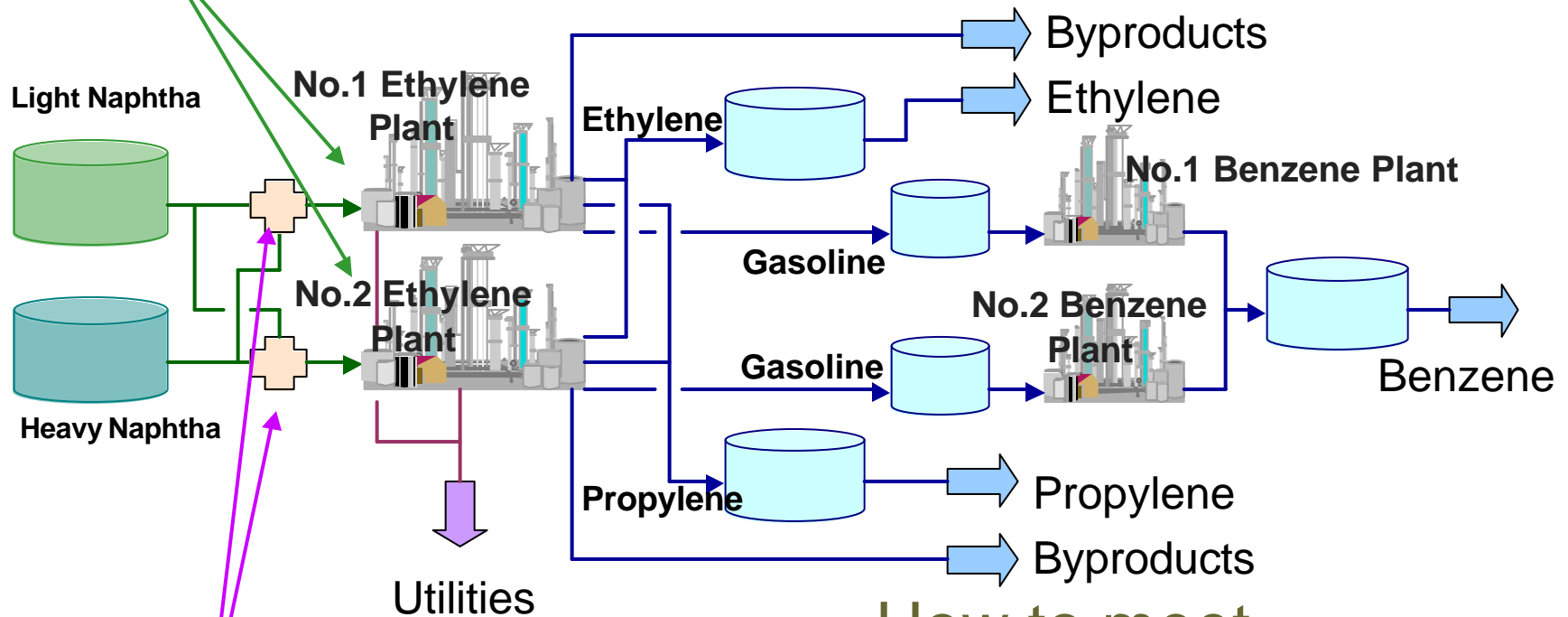
Main Focus:

Find optimal feedstock allocation for daily production scheduling, for meeting production demands

Case Study: Real Production Scheduling for 2 Ethylene and 2 Benzene Plants

4

Production target?



Optimal composition?

How to meet
Production Objective?

Modeling and Solution Approach

↳ Modeling approach

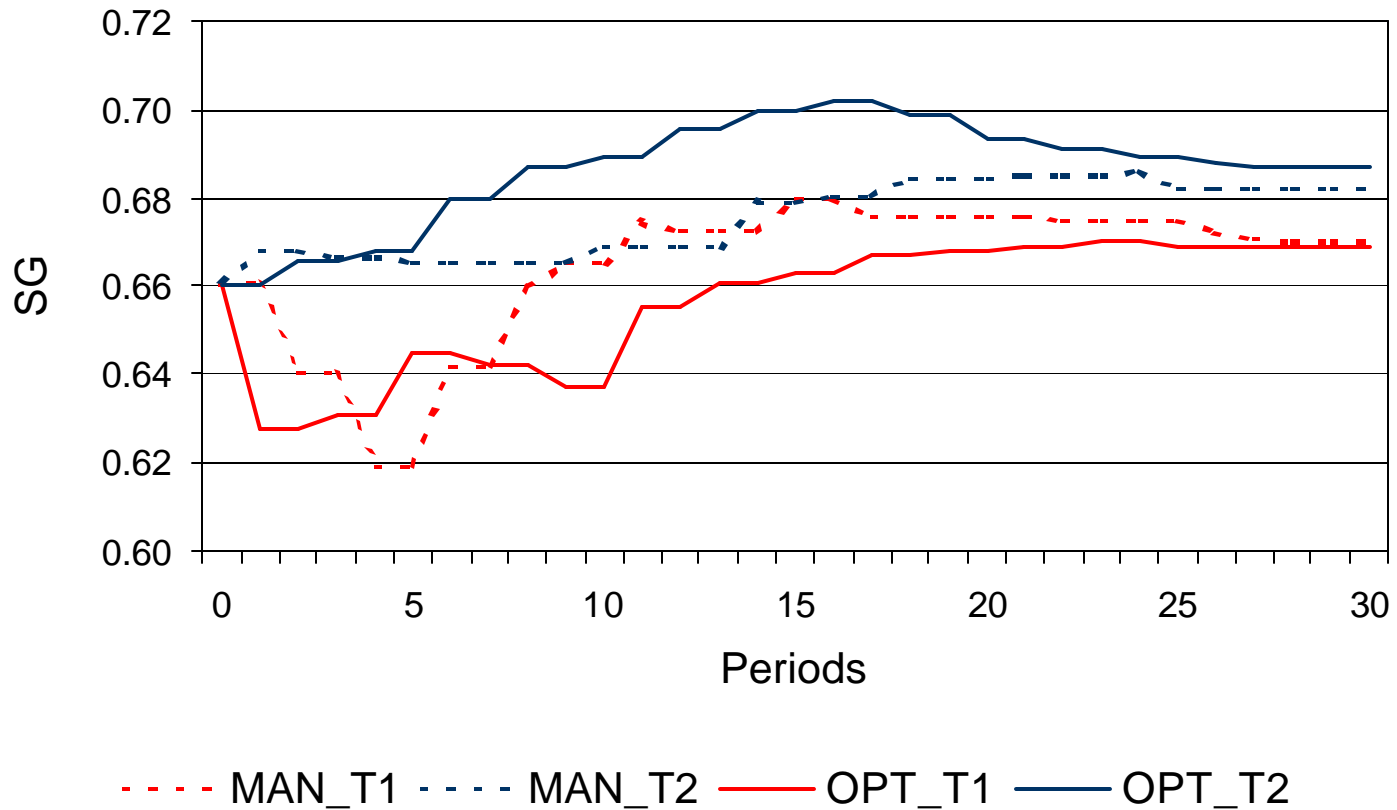
- Unit operation model building capability
- Equation based modeling approach
 - » MINLP model
- Modeling platform: GAMS modeling language
- Model size
 - » Continuous variables ~ 60k
 - » Binary variables ~ 1k

↳ Solution approach

- » Process knowledge based decomposition strategy
- » Use standard solvers:
 - **MILP: OSL**
 - **NLP: ConOpt**

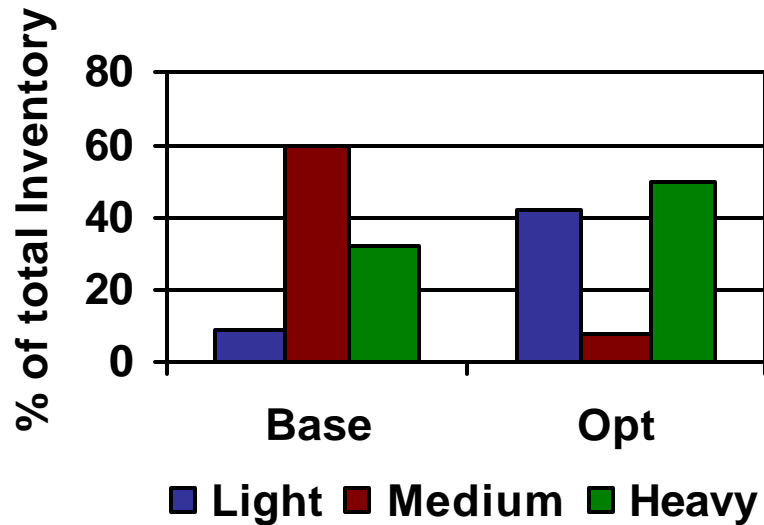
Naphtha Properties

Composition of Charging Tanks

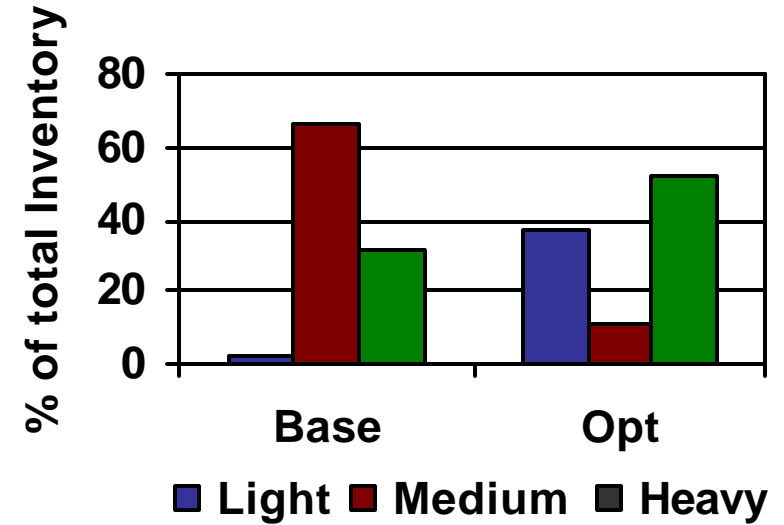


Naphtha Inventories

Fixed ETY & PPY Demands



Max ETY & PPY Productions



Application Manager

