

# GAMS

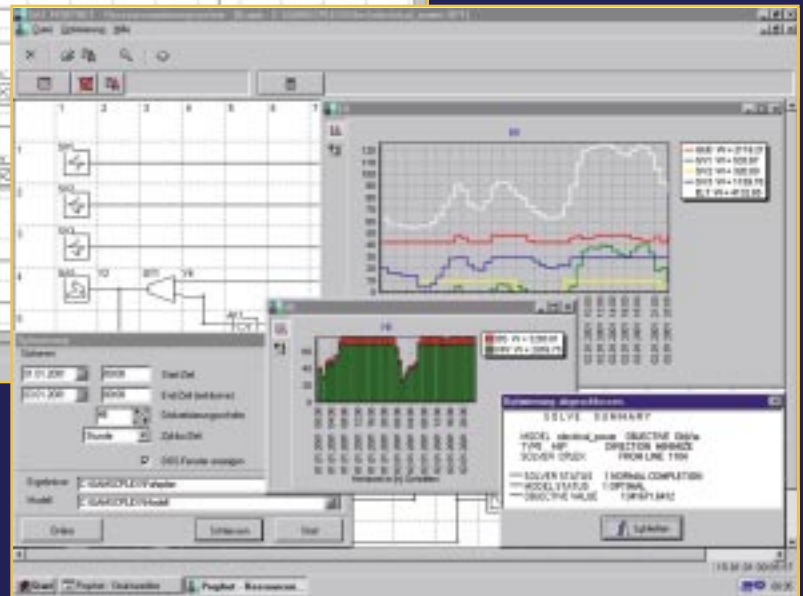
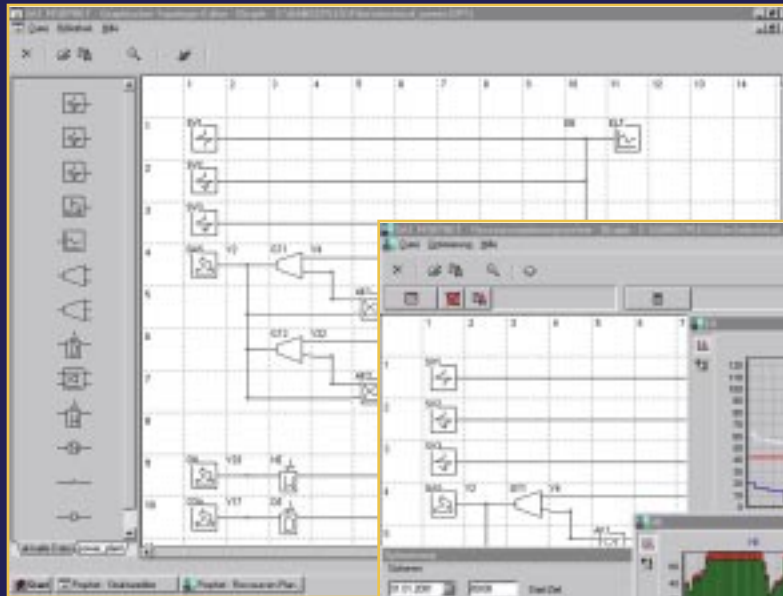


# Modeling for the real world!

Applications  
Platforms  
Solvers

# Different One Modeling Engine

## SAT PROPHET – Energy Management System for Liberalized Markets



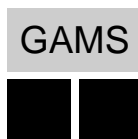
**The energy management system SAT PROPHET** includes the resource planning system (RPS) and the graphical topology editor (GTE). It has been developed for energy supply companies with combined heat and power generation and offers coordinated cost optimal planning of the power station park and the energy import from external companies. Modern forecasting and optimization techniques are used for the solution of this problem.

For further information about this application please contact: Stephan Eidt at +49-3677-669-4010 or mail to: [edt@ast.iitb.fhg.de](mailto:edt@ast.iitb.fhg.de)

### GAMS Development Corporation

1217 Potomac Street, N.W.  
Washington, D.C. 20007, USA  
Tel.: +1-202-342-0180  
Fax: +1-202-342-0181

[sales@gams.com](mailto:sales@gams.com) <http://www.gams.com>



### in Europe: GAMS Software GmbH

Eupener Str. 135-137  
50933 Cologne, Germany  
Tel.: +49-221-949-9170  
Fax: +49-221-949-9171

[info@gams.de](mailto:info@gams.de) <http://www.gams.de>